



Government of India
Ministry of Earth Sciences
India Meteorological Department



Press Release
Date: 26th May 2026
Time of Issue: 1430 hours IST

- Subject: (i) Heat wave to severe heat wave conditions likely to continue over Central & Northwest India during next 3-4 days; East & adjoining Peninsular India during next 2-3 days.**
(ii) Reduction in maximum temperatures and abatement of heat wave conditions are likely from 29th May onwards.
(iii) Isolated heavy to very rainfall likely over Northeast and adjoining East India during next 2-3 days and over Kerala and Tamil Nadu today, the 26th May, 2026.

Advance of Southwest Monsoon 2026 (Annexure I):

- ❖ The Northern Limit of Monsoon continues to pass through 7°N/60°E, 7°N/70°E, 7°N/75°E, 8°N/80°E, 10°N/85°E, 13.5°N/90°E, and 17°N/95°E as on 26th May 2026.
- ❖ Conditions are favourable for further advance of southwest monsoon into some more parts of southwest & southeast Arabian Sea, southwest, southeast & eastcentral Bay of Bengal and remaining parts of Andaman Sea during next 2-3 days.

Realised weather during past 24 hours ending at 0830 hours IST of today, the 26th May, 2026:

- ❖ **Heavy to very heavy rainfall (11-20 cm)** has been recorded at isolated places over Assam & Meghalaya and Bihar.
- ❖ **Heavy rainfall (7-11 cm)** has been recorded at isolated places over Tripura, Interior Karnataka, Tamil Nadu and Lakshadweep.
- ❖ **Thunderstorm accompanied with Squally/Gusty winds with speed reaching 80-120 kmph** prevailed at isolated places over Odisha, Jharkhand, Nagaland, Manipur, Mizoram & Tripura; **with speed reaching 60-80 kmph** over Bihar, Sub-Himalayan West Bengal & Sikkim, Uttar Pradesh, Coastal Andhra Pradesh, Tamil Nadu; **with speed reaching 40-60 kmph** over Gujarat State, Assam & Meghalaya, Madhya Maharashtra, Madhya Pradesh, Chhattisgarh, Vidarbha, Uttarakhand, Jammu-Kashmir, Gangetic West Bengal, Telangana and Marathawada.
- ❖ **Hailstorm** occurred at isolated places over Jammu-Kashmir, West Madhya Pradesh, Madhya Maharashtra and Telangana.
- ❖ **Duststorm** activity reported at isolated places over East Uttar Pradesh.
- ❖ **Heat wave to severe heat wave conditions** prevailed in many pockets over Vidarbha, Chhattisgarh; in isolated pockets over East Uttar Pradesh, East Madhya Pradesh; **Heat wave conditions prevailed** in isolated pockets over Uttarakhand, Haryana, West Uttar Pradesh, Rajasthan, West Madhya Pradesh, Bihar, Odisha, Telangana and Coastal Andhra Pradesh.
- ❖ **Warm night conditions** prevailed in isolated pockets over Uttar Pradesh, West Rajasthan, Madhya Pradesh and Vidarbha.

Temperature Conditions during past 24 hours till 0830 hours IST of today:

- ❖ **Day/Maximum Temperatures (as on 25-05-2026):** Yesterday, Maximum temperatures were in the range of 43-47°C over parts of Northwest India, Central India, adjoining Uttar Pradesh, East and north Peninsular India and 40-43°C over rest parts of the country except parts of Northeast India, Western Himalayan region and west south peninsular India. **The highest maximum temperature of 47.6°C was reported at BANDA (UTTAR PRADESH), and BRAHMPURI (MAHARASHTRA).**
- ❖ **Day/Maximum Temperature Departures (as on 25-05-2026):** Yesterday, Maximum temperatures were **appreciably above normal (3.1°C to 5.0°C)** over Uttarakhand, Haryana, Uttar Pradesh, Bihar, Jharkhand and Coastal Andhra Pradesh & Yanam; **above normal (1.6°C to 3.0°C)** over Himachal Pradesh, Punjab, Rajasthan, Madhya Pradesh, Saurashtra & Kutch, Vidarbha, Chhattisgarh, Gangetic West Bengal, Telangana and below normal or near normal over rest parts of the country.
- ❖ **Night Temperatures/Minimum temperatures (as on 26-05-2026)** were **above normal (1.6°C to 3.0°C)** over Uttarakhand, Uttar Pradesh, Rajasthan, Madhya Pradesh, Chhattisgarh, Gangetic West Bengal, Vidarbha, Odisha,

south Madhya Maharashtra, Coastal Andhra Pradesh & Yanam, Telangana, Rayalaseema, North Interior Karnataka and below normal or near normal over rest parts of the country.

Weather Systems, Forecast and Warnings (Annexure II & III):

- ❖ An upper air **cyclonic circulation** lies over south Bihar & neighbourhood in lower tropospheric levels.
- ❖ A north-south **trough** runs from south Bihar to north coastal Andhra Pradesh in lower tropospheric levels.
- ❖ An upper air **cyclonic circulation** lies over central Assam & neighbourhood in lower tropospheric levels.
- ❖ A **trough** runs from Punjab to northeast Arabian Sea in lower tropospheric levels.
- ❖ An upper air **cyclonic circulation** lies over Southeast Arabian Sea & neighbourhood in lower to upper tropospheric levels.
- ❖ An upper air **cyclonic circulation** lies over Westcentral Bay of Bengal & neighbourhood in lower to upper tropospheric levels.
- ❖ A fresh **Western Disturbance** likely to affect Northwest India from 28th May, 2026.

Under the influence of above systems, the following weather is likely:

Northeast India:

- ❖ **Fairly widespread to widespread** light to moderate rainfall with **thunderstorm, lightning & gusty winds (speed reaching 40-50 kmph)** likely over Nagaland, Manipur, Mizoram & Tripura on 26th & 27th May.
- ❖ **Isolated heavy rainfall** likely over Arunachal Pradesh on 26th, 27th May & 01st June; Assam & Meghalaya during 26th-28th May & on 31st May, 01st June; Nagaland, Manipur, Mizoram & Tripura on 26th, 27th, 31st May & 01st June with **isolated very heavy rainfall** also likely over Assam & Meghalaya on 26th May.

South Peninsular India:

- ❖ **Fairly widespread to widespread** light to moderate rainfall with **thunderstorm, lightning & gusty winds (speed reaching 40-50 kmph)** likely over Kerala & Mahe and Lakshadweep during 26th-28th May.
- ❖ **Isolated to scattered** light to moderate rainfall with **thunderstorm, lightning & gusty winds (speed reaching 40-50 kmph)** likely over Tamil Nadu, Puducherry & Karaikal, Interior Karnataka, Coastal Andhra Pradesh & Yanam, Telangana and Rayalaseema during 26th-30th May.
- ❖ **Thundersquall (wind speed reaching 50-60 kmph gusting to 70 kmph)** likely over North Interior Karnataka during 26th-28th; Telangana on 26th; Coastal Andhra Pradesh & Yanam on 26th & 27th May.
- ❖ **Isolated Heavy rainfall** also likely over Tamil Nadu, Puducherry & Karaikal, Kerala & Mahe, Lakshadweep on 26th; North Interior Karnataka on 27th May and South Interior Karnataka on 26th & 27th May.
- ❖ **Isolated Hailstorm activity** likely over North Interior Karnataka on 27th May.

East India:

- ❖ **Fairly widespread to widespread** light to moderate rainfall with **thunderstorm, lightning & gusty winds (speed reaching 40-50 kmph)** likely over Sub-Himalayan West Bengal & Sikkim on 26th & 27th May; Gangetic West Bengal during 26th-30th May and Andaman & Nicobar Islands during 28th May-01st June.
- ❖ **Isolated to scattered** light to moderate rainfall with **thunderstorm, lightning & gusty winds (speed reaching 40-50 kmph)** likely over Bihar & Odisha during 26th-30th May; Jharkhand during next 7 days.
- ❖ **Thundersquall (wind speed reaching 60-70 kmph gusting to 80 kmph)** likely over Bihar on 29th May.
- ❖ **Thundersquall (wind speed reaching 50-60 kmph gusting to 70 kmph)** likely over Sub-Himalayan West Bengal & Sikkim on 26th May; Bihar on 26th & 27th May; Gangetic West Bengal during 27th-29th May; Jharkhand during 26th-29th May; Odisha on 26th, 29th & 30th May.
- ❖ **Isolated heavy rainfall** likely over Andaman & Nicobar Islands during 26th-31st May; Sub-Himalayan West Bengal & Sikkim on 26th & 27th May; Bihar on 26th, 27th & 29th May.
- ❖ **Isolated Hailstorm activity** likely over Bihar on 26th May.

Northwest India:

- ❖ **Scattered to fairly widespread** light to moderate rainfall with **thunderstorm, lightning & gusty winds (speed reaching 40-50 kmph)** likely over Jammu-Kashmir and Uttarakhand during 28th-30th May; Himachal Pradesh on 28th & 29th May.
- ❖ **Scattered to fairly widespread** light to moderate rainfall with **thunderstorm, lightning & gusty winds (speed reaching 40-50 kmph)** likely over Punjab, Haryana, Chandigarh & Delhi, West Uttar Pradesh during 28th-31st and East Uttar Pradesh on 26th & during 28th-31st May.
- ❖ **Thundersquall (wind speed reaching 60-70 kmph gusting to 80 kmph)** likely over Punjab, Haryana Chandigarh & Delhi, West Uttar Pradesh on 28th & 29th; East Uttar Pradesh on 29th May.

- ❖ **Thundersquall (wind speed reaching 50-60 kmph gusting to 70 kmph)** likely over Jammu-Kashmir, Uttarakhand and Rajasthan on 28th & 29th; East Uttar Pradesh on 28th & 30th May.
- ❖ **Isolated Hailstorm activity** likely over Jammu-Kashmir, Himachal Pradesh, Uttarakhand, Punjab, Haryana Chandigarh & Delhi, West Uttar Pradesh on 28th & 29th May and East Uttar Pradesh on 29th May.
- ❖ **Duststorm** very likely at isolated places over Uttar Pradesh and Rajasthan on 28th & 29th May.

Central India:

- ❖ **Isolated** light to moderate rainfall with **thunderstorm, lightning & gusty winds (speed reaching 40-50 kmph)** likely over West Madhya Pradesh during 28th-30th May; East Madhya Pradesh on 26th & during 28th-30th May; Vidarbha on 26th & during 28th-30th and Chhattisgarh during 26th-30th May.

West India:

- ❖ **Isolated** light to moderate rainfall with **thunderstorm, lightning & gusty winds (speed reaching 40-50 kmph)** likely over Konkan & Goa and Madhya Maharashtra during 26th-29th May; Marathwada during 26th-28th May; Gujarat Region during 30th May-01st June; Saurashtra & Kutch on 01st June.

Forecast of maximum/day temperatures:

- ❖ No significant change in maximum temperatures likely over Northwest India till 27th May; gradual fall by 6-8°C on 28th & 29th May and gradual rise by 2-4°C during 30th May-01st June.
- ❖ No significant change in maximum temperatures likely over Central India till 28th May and gradual fall by 3-5°C during 29th May-01st June.
- ❖ No significant change in maximum temperatures likely over East India till 27th May and gradual fall by 2-4°C during 28th May-01st June.
- ❖ No significant change in maximum temperatures likely over Northeast India till 26th May and gradual rise by 4-6°C on 27th & 28th May and no significant change during 29th May-01st June.
- ❖ No significant change in maximum temperatures likely over Gujrat State and Telangana till 28th May and gradual fall by 2-3°C during 29th May-01st June.
- ❖ No significant change in maximum temperatures likely over the rest parts of country till 01st June 2026.

Heat Wave, Hot & Humid weather and Warm Night conditions warning:

- ❖ **Heat wave conditions** very likely in isolated/some pockets over Punjab, Haryana, Chandigarh & Delhi, East Uttar Pradesh during 26th-28th May with **severe heat wave conditions** in some pockets over Punjab on 27th; Haryana, Chandigarh & Delhi and Uttar Pradesh on 26th & 27th May.
- ❖ **Heat wave to severe heat wave conditions** very likely in many/isolated pockets over West Rajasthan during 26th-28th May.
- ❖ **Heat wave conditions** very likely in isolated pockets over Madhya Pradesh during 26th-29th May with **severe heat wave conditions** in isolated pockets over West Madhya Pradesh on 26th & 27th and East Madhya Pradesh during 26th-28th May.
- ❖ **Heat wave conditions** very likely in isolated pockets over Vidarbha during 26th-29th May with **severe heat wave conditions** in many pockets during 26th-28th May.
- ❖ **Heat wave conditions** very likely in isolated pockets over Jammu-Kashmir, Uttarakhand, Jharkhand on 26th & 27th; Himachal Pradesh, Chhattisgarh, Odisha, Coastal Andhra Pradesh & Yanam and Telangana during 26th-28th May.
- ❖ **Hot and humid weather conditions** likely to prevail over Gangetic West Bengal, Konkan on 26th & 27th; coastal areas of Saurashtra & Kutch during 26th-28th May; Tamil Nadu during 26th-29th; Odisha during 26th-30th; Coastal Andhra Pradesh on 29th & 30th May.
- ❖ **Warm Night conditions** very likely to prevail in isolated pockets over Punjab, Haryana, Chandigarh & Delhi, Uttar Pradesh, Madhya Pradesh, Vidarbha & Telangana on 26th & 27th and Odisha on 26th May.

Fisherman Warning:

Fishermen are advised not to venture into the following areas:

Bay of Bengal: Over Gulf of Mannar, Sri Lanka Coasts, over many parts of south & adjoining central Bay of Bengal during 26 May to 31st May. Along and off west Bengal adjoining north Odisha coasts during 28th to 30th May, over many parts of Andaman Sea during 28th to 31st May 2026.

Arabian Sea: Along and off Keralam coast, Lakshadweep on 26th May, Comorin areas during 26th to 31st May, along & off north Gujarat coast and adjoining northeast Arabian Sea during 29th to 31st May; Along and off Somalia coast, adjoining some parts of southwest Arabian Sea during on 26th to 31st May.

Weather conditions and forecast over Delhi/NCR during 26th -29th May, 2026 (Annexure IV)

For more details, kindly refer National Weather Bulletin:

https://mausam.imd.gov.in/responsive/all_india_forecast_bulletin.php

For District wise warnings refer: <https://mausam.imd.gov.in/responsive/districtWiseWarningGIS.php>

For Fishermen warning refer <https://rsmcnewdelhi.imd.gov.in/fishermenwarning.php>

Significant rainfall recorded (in cm) (from 0830 hours IST of yesterday to 0830 hours IST of today):

- ❖ **Assam & Meghalaya:** Williamnagar (dist East Garo Hills) 16, Salakati_AEGCL AWS (dist Kokrajhar) 14, Karimganj_aws (dist Sribhumi) 10, Bhaghmara (dist South Garo Hills) 9, Cherrapunji (dist East Khasi Hills) 7, B P Ghat (dist Sribhumi) 7, Mawkyrwat (dist South West Khasi Hills) 7, Cherrapunji(rkm) (dist East Khasi Hills) 7, A P Ghat (dist Cachar) 7;
- ❖ **Bihar:** Pranpur (dist Katihar) 13, Sameli (dist Katihar) 9, Dhamdaha (dist Purnea) 6;
- ❖ **Tripura:** Bhattacharjee Para (dist Dhalai) 11, Khowai (dist Khowai) 10, Dm Office Arg (dist West Tripura) 9, Kamalpur (dist Dhalai) 9, Amarpur (dist Gomati) 8, Sabroom (dist South Tripura) 8, Sabroom Aws (dist South Tripura) 8, Agartala Aero (dist West Tripura) 8, Lembuchhera (dist West Tripura) 8, A D Nagar_aws (dist West Tripura) 8, Arundhutinagar (dist West Tripura) 8, Met Agartala Aws (dist West Tripura) 8, Hrc Nagicherra Arg (dist West Tripura) 8, Ashapara Aws (dist North Tripura) 7, Dharmanagar/ Panisagar (dist North Tripura) 7, Kailashahar Aero (dist Unakoti) 7, Bagafa (dist South Tripura) 7, Kailashahar Aws (dist Unakoti) 7, Sonamura (dist Sipahijala) 7, Belonia (dist South Tripura) 7, Kadamtala Arg (dist North Tripura) 7;
- ❖ **South Interior Karnataka:** Mandya 9;
- ❖ **Tamil Nadu:** Vellore 8;
- ❖ **Lakshadweep:** Minicoy (Lakshadweep) 8;
- ❖ **North Interior Karnataka:** Sedam (dist Kalaburgi) 7

Gusty winds (in ≥ 40 kmph) (from 0830 hours IST of yesterday to 0830 hours IST of today):

- ❖ **Nagaland, Manipur, Mizoram & Tripura:** Maharani 115, Rajnagar 100, Met Agartala 65, Panisagar 65, Hezamara 56, Khowai 44, Dhalai 43, Sipahijala 39;
- ❖ **Jharkhand:** East Singhbhum 102;
- ❖ **Odisha:** Rourkela 98;
- ❖ **Tamil Nadu:** Natham_ISRO (Dindigul) 76;
- ❖ **West Uttar Pradesh:** Shahjahanpur 76, Mainpur 50, Bareilly 48, Bulandshahar 44, G. B. Nagar 41, Agra 35, Hindon 31;
- ❖ **Coastal Andhra Pradesh & Yanam:** Mylavaram_College_Of_Engineer 67;
- ❖ **East Uttar Pradesh:** Gorakhpur 65, Sitapur 65, Bahraich 63, Chitrakoot 52, Lucknow 46, Fursatganj & Varanasi 44, Prayagraj 43, Kanpur 35;
- ❖ **Sub-Himalayan West Bengal & Sikkim:** North Dinajpur 65; Majhian 63; Pundibari 46; Balurghat 44;
- ❖ **Bihar:** East Champaran 61;
- ❖ **Marathawada:** Ambejogai (Beed) 59, Hingoli 43;
- ❖ **Telangana:** Ghatkesar (Rangareddy) 56, Kaveri Siddipet(Siddipet) 46, Siricilla(Rajanna Siricilla) 46, KVK_Ramgiri_Khilla(Peddapalli) 42, Ibrahimpatnam(Rangareddy) 42, Cgwb Nagole(Medchal_Malkajgiri) 39, Karimnagar(Karimnagar) 37, Rars_Polasa_Jagtiyal(Jagtial) 35, Dullapally(Rangareddy) 35, Hyderabad(Hyderabad) 33, KVK_Prakasam_Jammikunta(Karimnagar) 33, KVK_Bellampally(Mancherial) 35, KVK_Tuniki(Medak) 31, KVK_Palem(Nagarkurnool) 30, ARS_Peddapally(Peddapalli) 33, Kandi (sangareddy) 30;
- ❖ **Gangetic West Bengal:** Jhargram 54; Kalyani 48; Hooghly 46; Gangasagar 43; Alipore 42; Agarpara, Nandakumar, Uluberia 41;
- ❖ **Jammu-Kashmir:** Ramban 54;
- ❖ **Uttarakhand:** Chamoli 54, Mukteshwar 43, Maldevta 39, Pantnagar 37, Kapkot 37; Kosiyakotli 37, Ranichauri 35, Champawat 35;
- ❖ **Vidarbha:** Wardha 54;
- ❖ **Chhattisgarh:** Bemetera 54;
- ❖ **Saurashtra & Kutch:** Khawda 54;
- ❖ **West Madhya Pradesh:** Sehore 50;
- ❖ **East Madhya Pradesh:** Shahdol 50;
- ❖ **Madhya Maharashtra:** Shahada (Nandurbar) 50, Jalgaon 44, Kalwan (Nashik) 43;
- ❖ **Assam & Meghalaya:** Manas 50, Kahikuchi 48, Guwahati 46, SCS_College_Of_Agriculture_Dhubri 41, ZRS_Diphu 41, VCBC_Rani 39, Down_Town_University 37, Gauhati_University 37, Karimganj 35, ZRS_Akbarpur 35, Kukurmara_Mirza 35, Gauripur 33, Nalbari 31, Mawkyrwat 56;
- ❖ **Gujarat Region:** Arnej 43

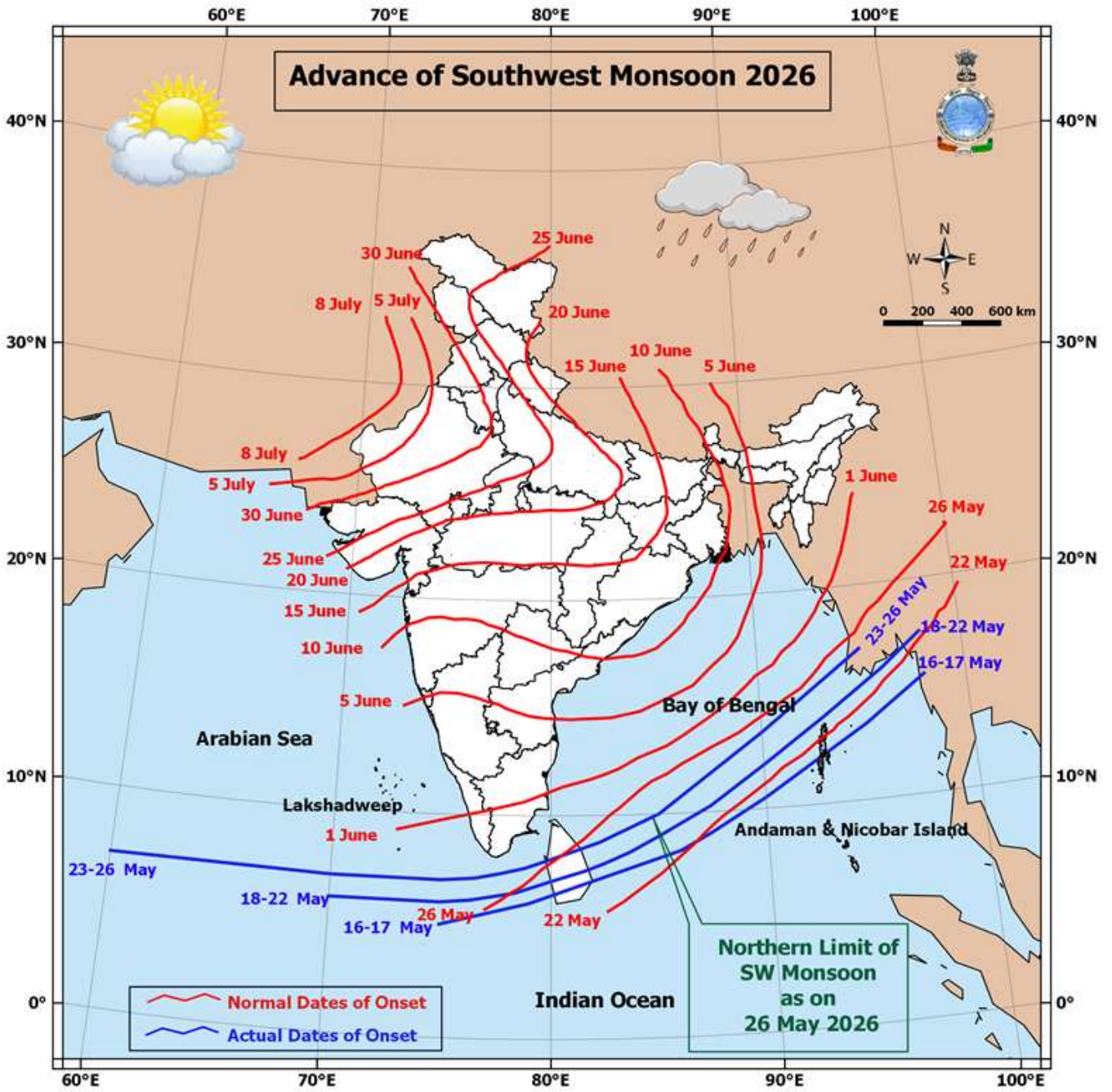
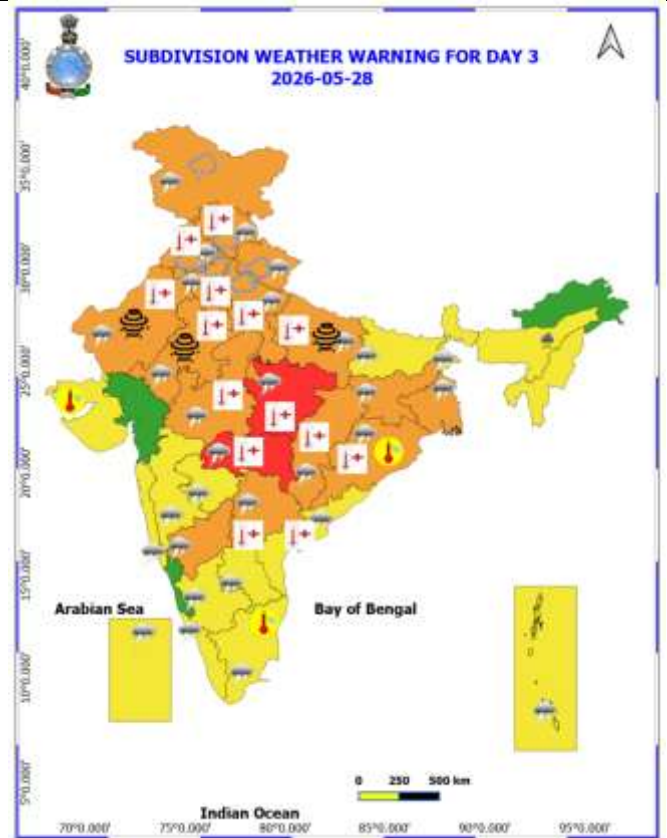
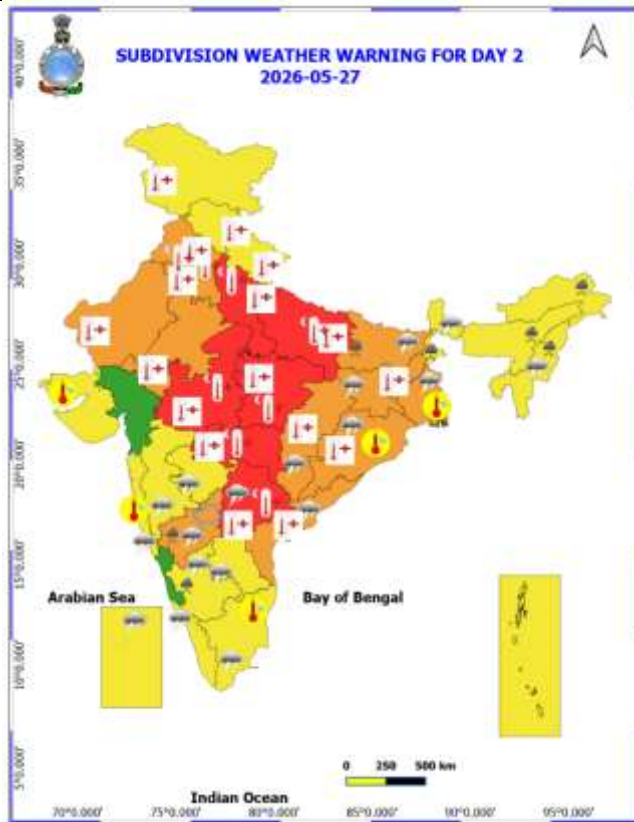
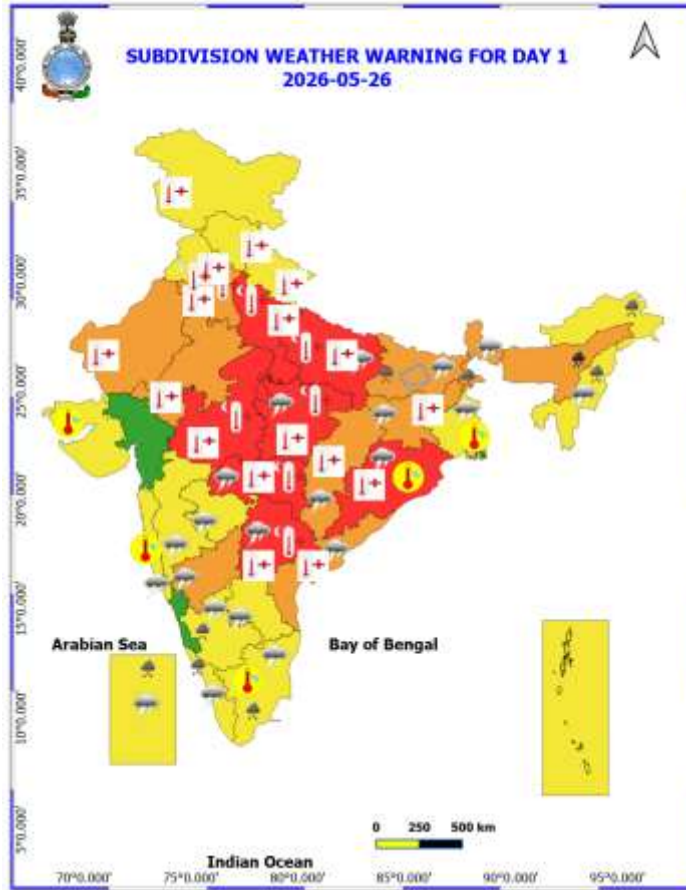
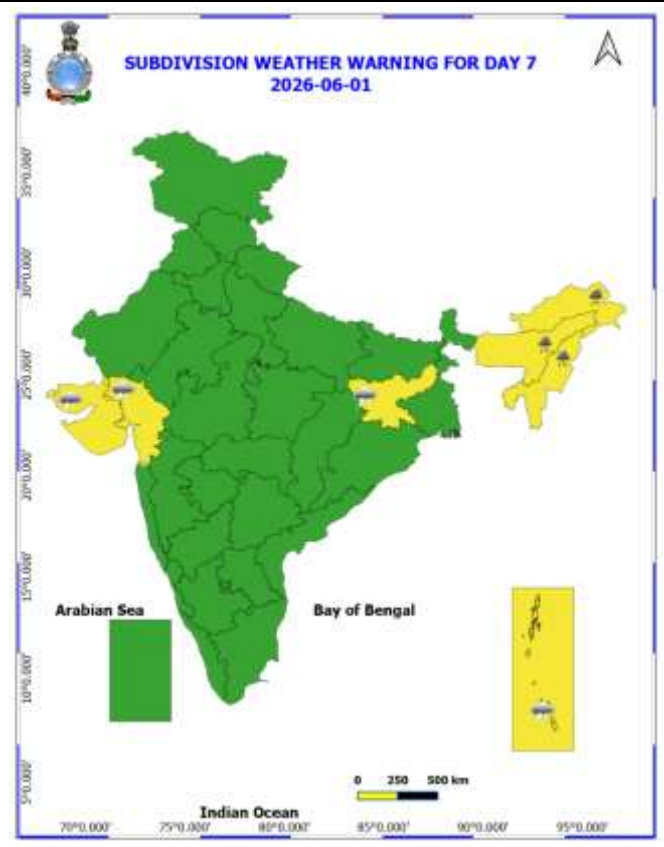
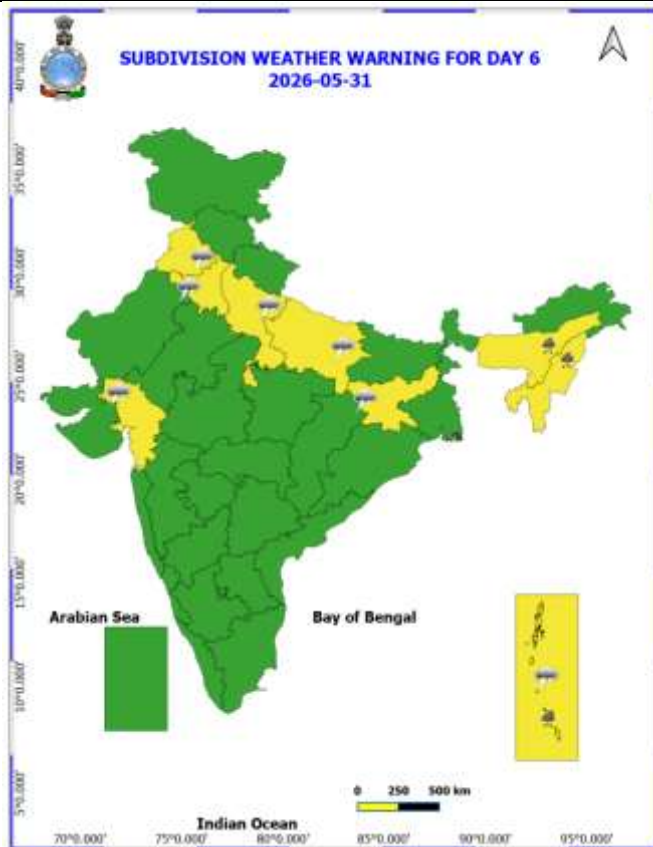
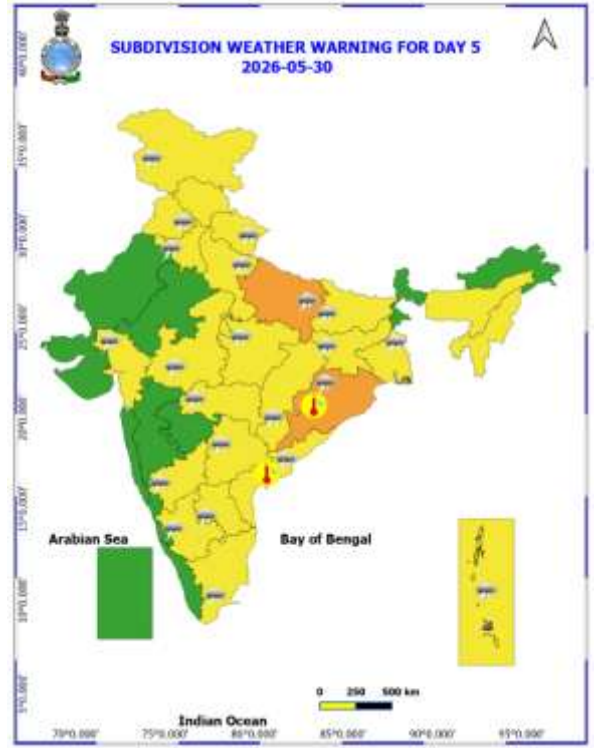
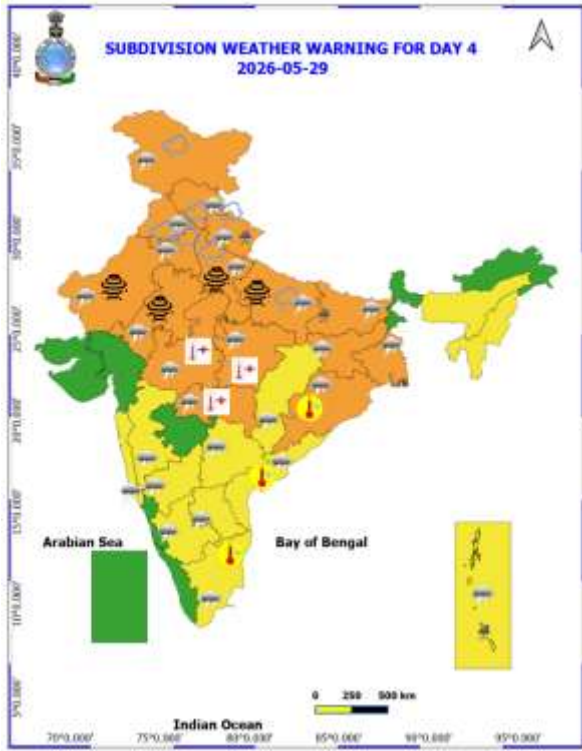


Table-1								
7 Days Rainfall Forecast								
S.No.	Subdivision	26- May	27- May	28- May	29- May	30- May	31- May	1- Jun
		Day 1	Day 2	Day 3	Day 4	Day 5	Day 6	Day 7
1	ANDAMAN & NICOBAR ISLANDS	WS	WS	WS	WS	WS	WS	WS
2	ARUNACHAL PRADESH	WS	FWS	SCT	SCT	SCT	SCT	FWS
3	ASSAM & MEHGHALAYA	WS	WS	FWS	SCT	SCT	FWS	FWS
4	NAGALAND, MANIPUR, MIZORAM AND TRIPURA	FWS	SCT	SCT	SCT	FWS	FWS	FWS
5	SUB HIMALAYAN WEST BENGAL & SIKKIM	WS	FWS	FWS	SCT	SCT	SCT	SCT
6	GANGETIC WEST BENGAL	SCT	FWS	WS	FWS	SCT	ISOL	ISOL
7	ODISHA	ISOL	ISOL	ISOL	SCT	SCT	ISOL	ISOL
8	JHARKHAND	ISOL	ISOL	SCT	SCT	SCT	ISOL	ISOL
9	BIHAR	SCT	SCT	ISOL	FWS	ISOL	ISOL	DRY
10	EAST UTTAR PRADESH	ISOL	ISOL	SCT	FWS	FWS	SCT	SCT
11	WEST UTTAR PRADESH	DRY	ISOL	SCT	SCT	FWS	SCT	ISOL
12	UTTARAKHAND	ISOL	ISOL	SCT	FWS	FWS	SCT	SCT
13	HARYANA, CHANDIGARH & DELHI	DRY	ISOL	ISOL	FWS	FWS	ISOL	DRY
14	PUNJAB	DRY	DRY	ISOL	FWS	FWS	ISOL	DRY
15	HIMACHAL PRADESH	DRY	DRY	FWS	FWS	SCT	ISOL	ISOL
16	JAMMU AND KASHMIR AND LADAKH	DRY	ISOL	SCT	SCT	ISOL	DRY	DRY
17	WEST RAJASTHAN	DRY	DRY	ISOL	ISOL	ISOL	ISOL	ISOL
18	EAST RAJASTHAN	DRY	DRY	ISOL	ISOL	ISOL	ISOL	ISOL
19	WEST MADHYA PRADESH	DRY	DRY	ISOL	ISOL	ISOL	ISOL	ISOL
20	EAST MADHYA PRADESH	DRY	DRY	DRY	ISOL	ISOL	ISOL	ISOL
21	GUJRAT REGION	DRY	DRY	DRY	DRY	ISOL	ISOL	ISOL
22	SAURASHTRA & KUTCH	DRY	DRY	DRY	DRY	DRY	DRY	ISOL
23	KONKAN & GOA	ISOL	ISOL	ISOL	ISOL	ISOL	ISOL	ISOL
24	MADHYA MAHARASHTRA	ISOL	ISOL	ISOL	ISOL	ISOL	ISOL	ISOL
25	MARATHWADA	ISOL	ISOL	ISOL	ISOL	ISOL	ISOL	ISOL
26	VIDARBHA	ISOL	DRY	ISOL	ISOL	ISOL	ISOL	ISOL
27	CHHATTISGARH	ISOL	ISOL	ISOL	ISOL	ISOL	ISOL	ISOL
28	COASTAL ANDHRA PRADESH	ISOL	ISOL	ISOL	ISOL	ISOL	ISOL	ISOL
29	TELANGANA	ISOL	ISOL	ISOL	ISOL	ISOL	ISOL	ISOL
30	RAYALASEEMA	ISOL	ISOL	ISOL	ISOL	ISOL	ISOL	ISOL
31	TAMILNADU & PUDUCHERRY	ISOL	ISOL	ISOL	ISOL	ISOL	ISOL	ISOL
32	COSTAL KARNATAKA	SCT	SCT	SCT	ISOL	ISOL	ISOL	ISOL
33	NORTH INTERIOR KARNATAKA	ISOL	ISOL	ISOL	ISOL	ISOL	ISOL	ISOL
34	SOUTH INTERIOR KARNATAKA	SCT	SCT	SCT	ISOL	ISOL	ISOL	ISOL
35	KERALA AND MAHE	WS	WS	FWS	FWS	FWS	FWS	FWS
36	LAKSHADWEEP	WS	WS	FWS	FWS	FWS	FWS	FWS

- As the lead period increases forecast accuracy decrease.





- Action may be taken based on ORANGE AND REDCOLOUR warnings.
- Vulnerable regions likely urban and hilly areas action may be initiated for heavy rainfall warning.
- As the lead period increases forecast accuracy decreases.

Detailed district-wise Multi-Hazard weather warning for next five days available at <https://mausam.imd.gov.in/responsive/districtWiseWarningGIS.php>

Weather forecast over Delhi/NCR during 26th May to 29th May 2026**Past Weather:**

There has been no change in maximum temperatures and fall in minimum temperatures by 3-6°C during past 24 hours over Delhi. The maximum temperatures were found 43-44°C and the minimum temperatures are in the range 26-27°C respectively during past 24 hours over Delhi. The minimum temperatures are normal (-1.5°C to 1.5°C) at most places over Delhi. The maximum temperatures were appreciably above normal (3.1°C to 5.0°C) at many places and above normal (1.6°C to 3.0°C) at remaining parts of Delhi. Partly cloudy sky with thunder and light rain along with westerly winds prevailed with speed 15-20 kmph gusting to 37 kmph over Delhi during past 24 hours. Mainly clear sky with surface wind speeds up to 15 kmph likely to prevail from southwest direction over the region in the forenoon today.

Weather Forecast:

26.05.2026: Mainly clear sky. Heat wave conditions at isolated places. Sustained strong surface winds speed reaching 20-30 kmph occasionally gusting to 40 kmph during the day. The maximum temperatures over Delhi are likely to be in the range of 43°C to 45°C. The predominant surface wind is likely to be from the northwest direction with surface wind speed reaching upto 25 kmph during the afternoon hours. The wind speed decrease and becoming up to 15 kmph from the northwest direction during evening and night.

27.05.2026: Mainly clear sky. Heat wave conditions at isolated places. Sustained strong surface winds speed reaching 20-30 kmph occasionally gusting to 40 kmph during the day. The maximum and minimum temperatures over Delhi are likely to be in the range of 44°C to 46°C and 27°C to 29°C, respectively. The minimum temperature will be above normal (-0.5°C to 3.5°C) at most places, and maximum temperatures will be above normal (2.5°C to 4.5°C) at most places over Delhi. The predominant surface wind is likely to be from west direction with surface wind speed reaching upto 15 kmph during the morning hours. The wind speed will increase and becoming less than 25 kmph from the west direction during afternoon hours. The wind speed will slightly decrease and become less than 20 kmph from the west direction during evening and night.

28.05.2026: Partly cloudy sky. Light rain accompanied with thunderstorm/lightning and gusty wind speed 40-50 kmph reaching 60 kmph during evening /night. The maximum and minimum temperatures over Delhi are likely to be in the range of 42°C to 44°C and 28°C to 30°C respectively. The minimum temperature will be above normal (1.6°C to 3.5°C) at most places, and the maximum temperature will be above normal (1.6°C to 3.0°C) over Delhi. The predominant surface wind is likely to be from northwest direction with surface wind speed reaching upto 15 kmph during the morning hours. The wind speed will increase and becoming less than 25 kmph from the northeast direction during afternoon hours. The wind speed will be less than 25 kmph from the southeast direction during evening and night.

29.05.2026: Generally cloudy sky. A spell of very light rain to light rain accompanied with thunderstorm/lightning and gusty wind speed 40-50 kmph reaching 60 kmph during forenoon/afternoon. Another spell of very light rain to light rain accompanied with thunderstorm/lightning and gusty wind speed 40-50 kmph reaching 60 kmph during night. The maximum and minimum temperatures over Delhi are likely to be in the range of 35°C to 37°C and 25°C to 27°C respectively. The minimum temperature will be normal (-1.5°C to 1.5°C) at most places, and the maximum temperature will be markedly below normal (-3.0°C to -5.0°C) over Delhi. The predominant surface wind is likely to be from the southeast direction with wind reaching upto 25 kmph from the morning to evening and night.

Impact expected and action suggested due to isolated thunderstorm with lightning, gusty/squally winds & hailstorm over

- ❖ **Thundersquall (wind speed reaching 60-70 kmph gusting to 80 kmph)** likely over Bihar on 29th May; Punjab, Haryana Chandigarh & Delhi, West Uttar Pradesh on 28th & 29th; East Uttar Pradesh on 29th May.
- ❖ **Thundersquall (wind speed reaching 50-60 kmph gusting to 70 kmph)** likely over North Interior Karnataka during 26th-28th; Sub-Himalayan West Bengal & Sikkim, Telangana on 26th; Bihar, Coastal Andhra Pradesh & Yanam on 26th & 27th May; Jharkhand during 26th-29th May; Odisha on 26th, 29th & 30th May; Gangetic West Bengal during 27th-29th May; Jammu-Kashmir, Uttarakhand and Rajasthan on 28th & 29th; East Uttar Pradesh on 28th & 30th May.
- ❖ **Isolated Hailstorm activity** likely over Bihar on 26th; North Interior Karnataka on 27th; Jammu-Kashmir, Himachal Pradesh, Uttarakhand, Punjab, Haryana Chandigarh & Delhi, West Uttar Pradesh on 28th & 29th May and East Uttar Pradesh on 29th May.

Impact expected:

- Breaking of tree branches, uprooting of large avenue trees. Large dead limbs blown from trees. Damage to Standing crops.
- Minor to Major damage to banana and papaya trees.
- Minor to major damage to power and communication lines due to breaking of branches.
- Strong wind/hail may damage plantation, horticulture and standing crops.
- Partial damage to vulnerable structures due to strong winds.
- Minor damage to kutcha houses/walls and huts.
- Loose objects may fly.

Action suggested:

- People are advised to keep a watch on the weather for worsening conditions and be ready to move to safer places accordingly.
- Stay indoors, close windows & doors and avoid travel if possible.
- Take safe shelters; do not take shelter under trees.
- Do not lie on concrete floors and do not lean against concrete walls.
- Unplug electrical/ electronic appliances.
- Immediately get out of water bodies.
- Keep away from all the objects that conduct electricity.

Impact Expected & Action Suggested due to heavy/very heavy rainfall over

- ❖ **Isolated heavy rainfall** likely over Arunachal Pradesh on 26th, 27th May & 01st June; Assam & Meghalaya during 26th-28th May & on 31st May, 01st June; Nagaland, Manipur, Mizoram & Tripura on 26th, 27th, 31st May & 01st June; Tamil Nadu, Puducherry & Karaikal, Kerala & Mahe, Lakshadweep on 26th; Andaman & Nicobar Islands during 26th-31st May; Sub-Himalayan West Bengal & Sikkim on 26th & 27th May; Bihar on 26th, 27th & 29th May; North Interior Karnataka on 27th May with **isolated very heavy rainfall** also likely over Assam & Meghalaya on 26th May.

Impact Expected

- Localized Flooding of roads, water logging in low lying areas and closure of underpasses mainly in urban areas.
- Occasional reduction in visibility due to heavy rainfall.
- Disruption of traffic in major cities due to water logging in roads leading to increased travel time.
- Minor damage to kutcha roads.
- Possibilities of damage to vulnerable structure.
- Localized Landslides/Mudslides/landslips/mudslips/landsinks/mudsinks.
- Damage to horticulture and standing crops in some areas due to inundation.
- It may lead to riverine flooding in some river catchments (for riverine flooding please visit Web page of CWC)

Action Suggested

- Check for traffic congestion on your route before leaving for your destination.
- Follow any traffic advisories that are issued in this regard.
- Avoid going to areas that face the water logging problems often.

- Avoid staying in vulnerable structure.

Impact expected and action suggested due to Heat wave/ severe heat wave conditions:

- ❖ Heat wave to severe heat wave conditions likely to continue over Central & Northwest India during next 3-4 days; East & adjoining Peninsular India during next 2-3 days.

Red alert Areas

- Very high likelihood of developing heat illness and heat stroke in all ages.
- Extreme care needed for vulnerable people.

Orange alert Areas

- High temperature & increased likelihood of heat illness symptoms in people who are either exposed to sun for a prolonged period or doing heavy work.
- High health concern for vulnerable people e.g. infants, elderly, people with chronic diseases.
- Avoid heat exposure– keep cool. Avoid dehydration.
- Drink sufficient water- even if not thirsty.
- Use ORS, homemade drinks like lassi, torani (rice water), lemon water, buttermilk, etc. to keep yourself hydrated.

Yellow alert Areas

- Moderate temperature & heat is tolerable for general public but moderate health concern likely for vulnerable people e.g. infants, elderly, people with chronic diseases.
- Avoid heat exposure.
- Wear lightweight, light colour, loose, cotton clothes.
- Cover your head, use a cloth, hat or umbrella.

Agromet advisories for likely impact of Hailstorms

- In **North Interior Karnataka and Bihar** use hail nets or hail caps in fruit orchards and vegetable plants to protect them from mechanical damage.
- Ensure effective field drainage to prevent waterlogging. Undertake picking of matured fruits at the earliest. Keep the harvested produce in safe places.

Agromet advisories for likely impact of Heavy Rainfall

- In **Arunachal Pradesh**, ensure proper drainage in vegetable, maize, and nursery fields. In WRC paddy, keep drainage channels open to remove excess water from nursery beds. Cover newly sown nursery beds with polythene sheets or straw mulch.
- In **Assam**, undertake harvesting of *Boro* rice after current spells of heavy rain and store the already harvested produce in a safe place. Cover the rice nursery beds with thin polythene sheet. Ensure proper drainage arrangements for quick removal of excess water from rice nurseries, vegetables, banana, citrus and papaya fields.
- **Meghalaya**, harvest the mature banana fruits immediately during clear weather. Make necessary arrangements to remove excess rainwater from the maize, ginger, vegetable, banana and other orchard fields crop fields.
- In **Nagaland**, delay transplanting of brinjal in main field. For already transplanted seedlings, maintain proper drainage in and around the fields of maize, vegetables and orchard.
- In **Manipur**, ensure that ridges and bunds around rice fields are well constructed to maintain the required water level; provide adequate drainage to remove excess rain water from chilli, ginger, turmeric, banana and other crops.
- In **Mizoram**, create drainage channels surrounding the rice fields and utilize grass mulch to cover the seeds. Provide support to fruit-bearing or partially lodge plants/trees. Propping should be done to prevent maize plants from lodging.
- **Tripura** – undertake harvesting of mature Boro rice immediately and shift the harvested produce to a safe and dry place for storage.
- In **Sub-Himalayan West Bengal and Sikkim**, undertake harvesting of matured rice & maize after current spells of heavy rains and keep already harvested produce in a safe place. Ensure proper drainage in rice, maize, jute and vegetables. Postpone fresh sowing of okra.

- **Bihar**, withhold irrigation in standing crops. Prepare paddy nursery fields with proper drainage arrangements.
- In **Tamil Nadu**, maintain proper drainage to prevent water stagnation in cotton, rice nurseries, recently sown cumbu and vegetables,
- In **Kerala**, provide adequate drainage for banana, coconut, and other vegetables. Provide support to banana plants.
- **Lakshadweep**, provide adequate drainage in standing crop fields to prevent waterlogging.
- In **Interior Karnataka**, undertake harvesting of matured rice after current spells of rain, ensure proper drainage in paddy fields, arecanut and mango orchards. Provide staking to tomato plants.

Agromet advisories for likely impact of High temperatures/ Heat Waves

- In **Jammu & Kashmir** - apply light and frequent irrigation to the standing crops, use temporary shade nets to protect the fruit plants from high temperatures.
- **Himachal Pradesh**, apply irrigation to tomato and cucumber nursery as per requirement. Thatch the vegetable nursery plants with grass to conserve moisture.
- **Uttarakhand**, carry out hoeing and weeding in sugarcane; use trash mulch. Apply irrigation to maize, tomato and brinjal as per requirement and cover the soil with mulch.
- In **Punjab**, apply light and frequent irrigation to vegetable, moong fruit plants orchards and onion nurseries.
- In **Haryana**, maintain adequate irrigation in standing sugarcane, cotton and summer fodder crops. Complete paddy nursery preparation with assured irrigation facilities and adopt mulching/moisture conservation practices to reduce water stress in newly sown crops
- In **Uttar Pradesh**, provide frequent irrigation and mulching for standing crops such as maize, green gram, black gram, sugarcane, sunflower, vegetables, and fruit plants such as mango, banana, and papaya.
- In **Rajasthan**, apply need-based irrigation to green gram and summer cucurbit crops such as bottle gourd, pumpkin, ridge gourd, cucumber, bitter melon, and summer ladyfinger, as well as to young fruit plants such as mango, amla, pomegranate, wood apple, and plum. Undertake soil mulching/mulching with straw/polythene to reduce water loss by evaporation.
- In **Jharkhand**, provide light at frequent intervals for pulses and vegetables.
- In **Odisha** - Provide light irrigation to *Boro* paddy, summer maize, green gram, black gram, groundnut, and vegetable fields. Ensure adequate soil moisture is maintained in mango and cashew crops.
- In **Madhya Pradesh**, apply light irrigation to maize, *moong*, *urd*, groundnut, and vegetable crops as required.
- In **Chhattisgarh** - Apply light irrigation after weeding and hoeing in *rabi* maize, banana, and papaya plantations. Complete harvesting of wheat and chickpea, and ensure safe storage.
- In **Vidarbha**, provide light and frequent irrigation to sugarcane, vegetables and orchards during morning or evening hours, with increased frequency during critical growth stages; use organic or straw mulch in vegetables and orchards; cover banana bunches with leaves; and use shade nets in newly planted banana plantations.
- In **Telangana**, provide irrigation to mango orchards and vegetable crops, as required.
- In **Coastal Andhra Pradesh**, apply light irrigation to summer crops and vegetables to maintain soil moisture. Apply mulching to conserve soil moisture in the standing crops.

Agromet advisories for likely impact of Thunderstorm / Gusty Winds

- Shift the harvested produce in safer places or cover the produce with tarpaulin sheets in the fields. Tie the harvested crops securely and cover them to minimize the risk of displacement from strong surface winds.
- Provide mechanical support to horticultural crops and staking or support to vegetables and young fruit plants / fruit-bearing plants to avoid lodging due to strong winds.

Livestock / Poultry / Fisheries

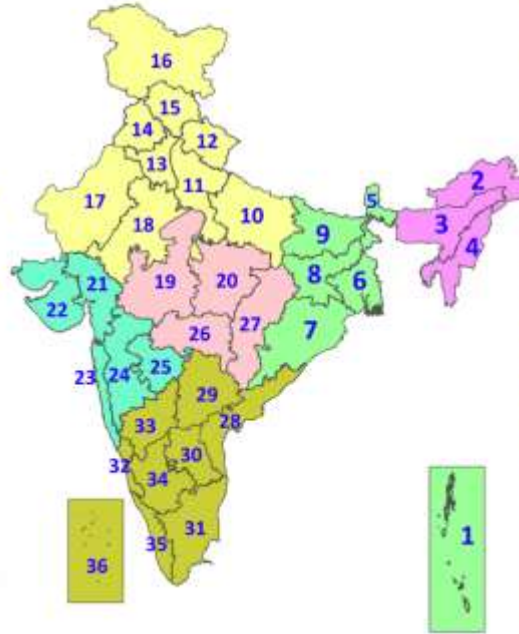
- Keep the animals inside the shed during hailstorms/ heavy rainfall and provide them with balanced feed.
- Store feed and fodder in a safe place to prevent spoilage.
- Construct an outlet with proper netting around the ponds to drain excess water, thereby preventing fish from escaping in the event of overflow.
- In regions with high temperatures and heat waves, provide clean, hygienic, and ample drinking water for animals, and cover the roofs of poultry sheds with grass to reduce the adverse effects.

Legends & abbreviations:

- ❖ **Heavy Rain:**64.5115.5mm; **Very Heavy Rain:**115.6204.4mm; **Extremely Heavy Rain:** >204.4mm.
- ❖ **Obsy:** Observatory; Automatic Weather Station; **ARG:** Automatic Rain Gauge; **dist:** District; **NH:** National Highway; **KVK:** Krishi Vigyan Kendra; **DVC:** Damodar Valley Corporation; **PTO:** Part Time Office, **Aero:** Aerodrome, **IAF:** Indian Air Force.
- ❖ **Region wise classification of meteorological Sub-Divisions:**
 - **Northwest India:** Western Himalayan Region (Jammu-Kashmir-Ladakh-Gilgit-Baltistan-Muzaffarabad, Himachal Pradesh and Uttarakhand); Punjab, Haryana Chandigarh & Delhi; West Uttar Pradesh, East Uttar Pradesh, West Rajasthan and East Rajasthan.
 - **Central India:** West Madhya Pradesh, East Madhya Pradesh, Vidarbha and Chhattisgarh.
 - **East India:** Bihar, Jharkhand, Sub-Himalayan West Bengal & Sikkim; Gangetic West Bengal, Odisha and Andaman & Nicobar Islands.
 - **Northeast India:** Arunachal Pradesh, Assam & Meghalaya and Nagaland, Manipur, Mizoram & Tripura.
 - **West India:** Gujarat Region, Saurashtra & Kutch, Coastal Maharashtra (Konkan) & Goa, Madhya Maharashtra and Marathawada.
 - **South India:** Coastal Andhra Pradesh & Yanam, Telangana, Rayalaseema, Coastal Karnataka, North Interior Karnataka, South Interior Karnataka, Kerala & Mahe, Tamil Nadu, Puducherry & Karaikal and Lakshadweep.

LEGENDS

1. अंडमान और निकोबार द्वीपसमूह
2. अरुणाचल प्रदेश
3. असम और मेघालय
4. नागालैंड, मणिपुर, मिजोरम और त्रिपुरा
5. उप-हिमालयी पश्चिम बंगाल और सिक्किम
6. गंगीय पश्चिम बंगाल
7. ओडिशा
8. झारखंड
9. बिहार
10. पूर्वी उत्तर प्रदेश
11. पश्चिम उत्तर प्रदेश
12. उत्तराखंड
13. हरियाणा, चंडीगढ़ और दिल्ली
14. पंजाब
15. हिमाचल प्रदेश
16. जम्मू और कश्मीर और लद्दाख
17. पश्चिम राजस्थान
18. पूर्वी राजस्थान
19. पश्चिम मध्य प्रदेश
20. पूर्वी मध्य प्रदेश
21. गुजरात
22. सौराष्ट्र
23. कोंकण और गोवा
24. मध्य महाराष्ट्र
25. मराठवाड़ा
26. विदर्भ
27. छत्तीसगढ़
28. तटीय आंध्र प्रदेश और यनम
29. तेलंगाना
30. रायलसीमा
31. तमिलनाडु, पुडुचेरी और कराईकल
32. तटीय कर्नाटक
33. आंतरिक उत्तरी कर्नाटक
34. आंतरिक दक्षिणी कर्नाटक
35. केरल और माहे
36. लक्षद्वीप



1. Andaman & Nicobar Islands
2. Arunachal Pradesh
3. Assam & Meghalaya
4. Nagaland, Manipur, Mizoram & Tripura
5. Sub-Himalayan West Bengal & Sikkim
6. Gangetic West Bengal
7. Odisha
8. Jharkhand
9. Bihar
10. East Uttar Pradesh
11. West Uttar Pradesh
12. Uttarakhand
13. Haryana, Chandigarh & Delhi
14. Punjab
15. Himachal Pradesh
16. Jammu & Kashmir and Ladakh
17. West Rajasthan
18. East Rajasthan
19. West Madhya Pradesh
20. East Madhya Pradesh
21. Gujarat
22. Saurashtra
23. Konkan & Goa
24. Madhya Maharashtra
25. Marathwada
26. Vidarbha
27. Chhattisgarh
28. Coastal Andhra Pradesh & Yanam
29. Telangana
30. Rayalaseema
31. Tamilnadu, Puducherry & Karaikal
32. Coastal Karnataka
33. North Interior Karnataka
34. South Interior Karnataka
35. Kerala & Mahe
36. Lakshadweep

SPATIAL DISTRIBUTION (% of Stations reporting)

% Stations	Category	% Stations	Category
76-100	Widespread (WS/Most Places)	26-50	Scattered (SCT/A Few Places)
51-75	Fairly Widespread (FWS/Many Places)	1-25	Isolated (ISOL)

- | | | |
|----------------------|----------------------|--------------|
| Fog | Heavy Snow | Cold Wave |
| Heavy Rain | Dust Storm | Cold Day |
| Very Heavy Rain | Heat Wave | Ground Frost |
| Extremely Heavy Rain | Warm Night | |
| Thunder & Lightning | Hot Day | |
| Hailstorm | Hot & Humid | |
| Dust Raising Winds | Strong Surface Winds | |

COLOUR CODED WARNING

No Warning (No Action)
Watch (Be Aware)
Alert (Be Prepared To Take Action)
Warning (Take Action)

Probabilistic Forecast

Terms	Probability of Occurrence (%)
Unlikely	< 25
Likely	25 - 50
Very Likely	50 - 75
Most Likely	> 75

* Red colour warning does not mean "Red Alert", Red colour warning means "Take Action".
Forecast and Warning for any day is valid from 0830 hours IST of day till 0830 hours IST of next day.
For more details, kindly visit <https://mausam.imd.gov.in> or contact: 011-2434-4599
(Service to the Nation since 1875)

DEFINITION/CRITERIA

Rain/ Snow *	<p>Heavy: 64.5 to 115.5 mm/cm *</p> <p>Very Heavy: 115.6 to 204.4 mm/cm*</p> <p>Extremely Heavy: > 204.4 mm/cm *</p>
Heat Wave	<p>When maximum temperature of a station reaches $\geq 40^{\circ}\text{C}$ for plains and $\geq 30^{\circ}\text{C}$ for hilly regions</p> <p>(a) Based on Departure from normal</p> <p>Heat Wave: Maximum Temperature Departure from normal 4.5°C to 6.4°C.</p> <p>Severe Heat Wave: Maximum Temperature Departure from normal $\geq 6.5^{\circ}\text{C}$</p> <p>(b). Based on Actual maximum temperature</p> <p>Heat Wave: When actual maximum temperature $\geq 45^{\circ}\text{C}$.</p> <p>Severe Heat Wave: When actual maximum temperature $\geq 47^{\circ}\text{C}$</p> <p>(c). Criteria for heat wave for coastal stations</p> <p>When maximum temperature departure is $>4.5^{\circ}\text{C}$ from normal. Heat Wave may be described provided maximum temperature $\geq 37^{\circ}\text{C}$</p>
Warm Night	<p>When maximum temperature remains 40°C</p> <p>Warm Night: When minimum temperature departure 4.5°C to 6.4°C.</p> <p>Severe Warm Night: When minimum temperature departure $>6.4^{\circ}\text{C}$.</p>
Cold Wave	<p>When minimum temperature of a station $\leq 10^{\circ}\text{C}$ for plains and $\leq 0^{\circ}\text{C}$ for hilly regions.</p> <p>(a). Based on departure</p> <p>Cold Wave: Minimum Temperature Departure from normal -4.5°C to -6.4°C.</p> <p>Severe Cold Wave: Minimum Temperature Departure from normal $\leq -6.5^{\circ}\text{C}$</p> <p>(b) Based on actual Minimum Temperature (for Plains only)</p> <p>Cold Wave : When Minimum Temperature is $\leq 4.0^{\circ}\text{C}$</p> <p>Severe Cold Wave: When Minimum Temperature is $\leq 2.0^{\circ}\text{C}$</p> <p>(c) For Coastal Stations</p> <p>When Minimum Temperature departure is $\leq -4.5^{\circ}\text{C}$ & actual Minimum Temperature is $\leq 15^{\circ}\text{C}$</p>
Cold Day	<p>When minimum temperature of a station $\leq 10^{\circ}\text{C}$ for plains and $\leq 0^{\circ}\text{C}$ for hilly regions</p> <p>Based on departure</p> <p>Cold Day: Maximum Temperature Departure from normal -4.5°C to -6.4°C.</p> <p>Severe Cold Day: Maximum Temperature Departure from normal $\leq -6.5^{\circ}\text{C}$</p>
Fog	<p>Phenomenon of small droplets suspended in air and the horizontal visibility $< 1\text{km}$</p> <p>Moderate Fog: When the visibility between 500-200 metres</p> <p>Dense Fog: when the visibility between 50- 200 metres</p> <p>Very Dense Fog: when the visibility < 50 metres</p>
Thunderstorm	<p>Sudden electrical discharges manifested by a flash of light (Lightning) and a sharp rumbling sound (thunder)</p>
Dust/Sand Storm	<p>An ensemble of particles of dust or sand energetically lifted to great heights by a strong and turbulent wind.</p>
Frost	<p>Ice deposits on ground</p> <p>Air temperature $\leq 4^{\circ}\text{C}$ (over Plains)</p>
Squall	<p>A strong wind that rises suddenly, lasts for atleast 1 minute.</p> <p>Moderate: Wind speed 52-61 kmph</p> <p>Severe: Wind speed 62-67 kmph</p> <p>Very Severe: Wind speed >67 kmph</p>
Sea State	<p>Effect of various waves in the sea over specific area</p> <p>Rough to very rough: Wind speed 41-62 kmph (22-33 knots) & Wave height 2.5-6 metre</p> <p>High to very high: Wind speed 63-117 kmph (34-63 knots) & Wave height 6-14 metre</p> <p>Phenomenal: Wind speed >117 kmph (>63 knots) & Wave height >14 metre</p>
Cyclone	<p>Cyclonic Storm: Wind speed 62-67 kmph (34-47 knots)</p> <p>Severe Cyclonic Storm: Wind speed 88-117 kmph (48-63 knots)</p> <p>Very Severe Cyclonic Storm: Wind speed 118-165 kmph (64 - 89 knots)</p> <p>Extremely Severe Cyclonic Storm: Wind speed 166-220 kmph (90 -119 knots)</p> <p>Super Cyclone Storm: Wind speed >220 kmph (>119 knots)</p>

* Red colour warning does not mean "Red Alert", Red colour warning means "Take Action".
Forecast and Warning for any day is valid from 0830 hours IST of day till 0830 hours IST of next day.
For more details, kindly visit <https://mausam.imd.gov.in> or contact: 011-2434-4599
(Service to the Nation since 1875)